



In order to start using the **Aladdin USB PKI stick**, i.e. in order to access PBZCOM@NET service via this stick, **it is necessary to run a one-time installation of the program support** which is to be found on the USB stick.

NOTE: In order to install the program, you must have the administrator authority on your computer. After a successful installation, in order to access PBZCOM@NET, you should simply plug in the USB stick and you will no longer need the administrator authority.

Program installation procedure

1. **Plug the Aladdin USB PKI stick** into a free USB port on your computer. Upon plugging in, a message may appear (*Figure 1*) within which you need to choose the option **Cancel**. Apart from the message shown in *Figure 1*, a message about a problem that occurred during installation may also appear (*Figure 2*), which you can ignore.

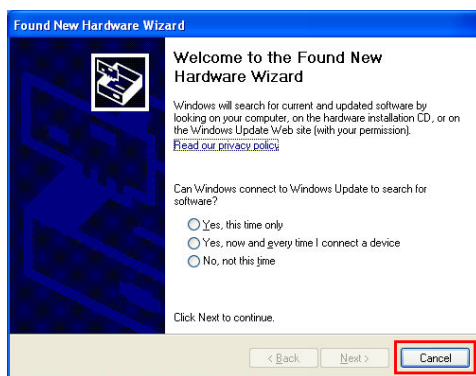


Figure 1 – Message about a new device



Figure 2 – Message about unsuccessful installation

- a. After these messages (*Figure 1* and/or *Figure 2*), you will be offered the "autorun" option, where you can select the "Run autorun.exe" ("Pokreni autorun.exe") option.
- b. If after the mentioned messages (*Figure 1* and/or *Figure 2*) the autorun option does not start automatically, you should do the following:
 - open **Moje računalo** (My Computer)
 - click the right mouse button on the PBZ icon and choose the option **Otvori /Open** (*Figure 3*)
 - click the right mouse button on the *aladdin.exe* icon (*aladdin* if no file extension is shown) and choose the option **Otvori/Open** (*Figure 4*)

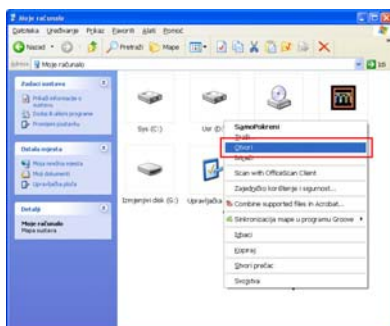


Figure 3 – How to access the program support

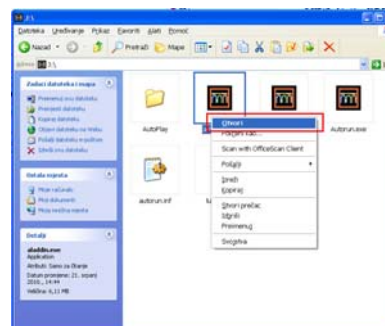


Figure 4 – How to start the program support

2. After starting the installation interface for the purpose of installation and setting of the program support (*Figure 5*), please select the option **Instalacija /Installation** and follow the next steps.



Figure 5 – Installation window home page screen

3. After installation please restart your computer and access PBZCOM@NET (<http://com.pbz.hr/>). For any further questions or clarifications, please call our toll-free info number 0800 PBZ COM (0800 729 266), or contact us via e-mail address: com@pbz.hr

Change of the PIN

1. Plug the Aladdin USB PKI stick into a free USB port on your computer.
2. Start eToken PKI Client (there are two ways for doing it):
 - a. Click the right mouse button on the eToken PKI Client icon in the right bottom corner of the screen, next to the system clock, and choose the option Change eToken Password (Figure 6) or

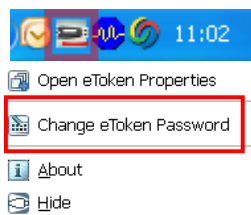


Figure 6 – Choosing the PIN change

- b. Start eToken Properties (Start -> Programi -> eToken -> eToken PKI Client -> eToken Properties) and choose the option Change eToken Password (Figure 7)



Figure 7 – Choosing the option to change the PIN

3. In the first blank space **enter your current PIN** (Current eToken Password), and in the second (New eToken Password) and the third blank space (Confirm New eToken Password) **enter the new PIN** (Figure 8). After you fill-in all the blanks, it will be possible to click on **OK** (Figure 9).



Figure 8 - PIN change screen



Figure 9 – Properly entered data for the PIN change

- After clicking on **OK**, the message about a successful change of PIN will appear.



Figure 10 – the message about a successful PIN change

Unlocking of the USB PKI Aladdin stick

USB PKI Aladdin stick will become locked after 5 successive incorrect PIN entries. In order to continue working with it, you should unlock it by using the Unlock Code.

Please follow these steps:

- Plug the Aladdin USB PKI stick** into a free USB port on your computer.
- Start eToken PKI Client** application in one of the two ways:
 - Click the right mouse button on the *eToken PKI Client* icon in the right bottom corner of the screen, next to the system clock, and choose the option *Open eToken Properties* (*Figure 11*) or

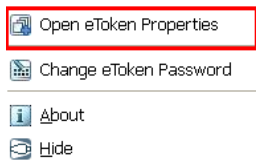


Figure 11 – how to start eToken Properties

- Start eToken Properties (Start -> Programi -> eToken -> eToken PKI Client -> eToken Properties)
- Choose Napredni pregled (Advanced View)** by clicking on the applicable icon (as shown in *Figure 12*).

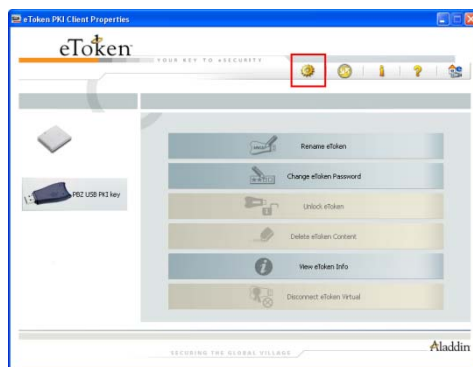


Figure 12 - How to choose Advanced View

- In the Advanced View window on the left side **choose USB PKI Aladdin stick** and choose the option **Log on as Administrator** (marked in *Figure 13*).

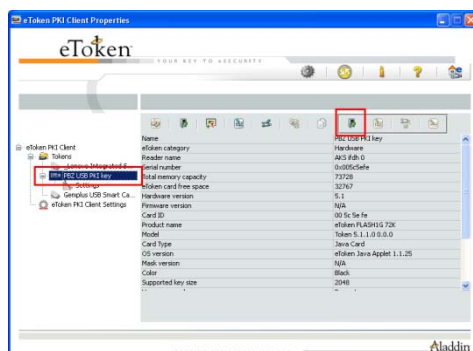


Figure 13 – The screen for logging-on as Administrator

5. In the blank for Password **enter the Unlock Code** and click **OK** (Figure 14).

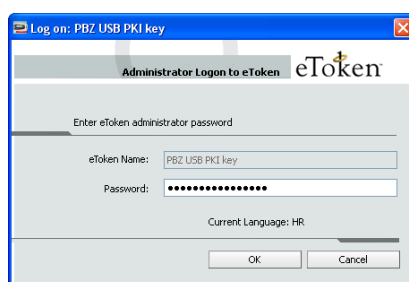


Figure 14 – The screen for entering the unlock code

6. After you have logged on as Administrator, a new PIN should be set. Choose the option **Set User Password** (marked in Figure 15).

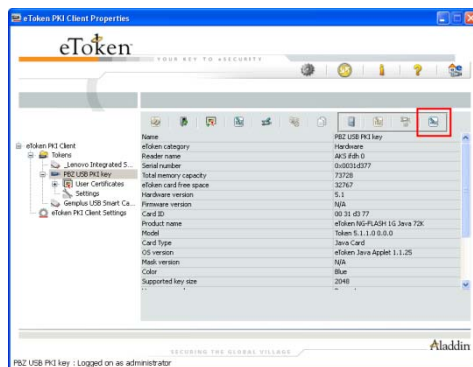


Figure 15 – Changing/setting of the new PIN

7. On the *Set Password: USB key* screen **enter twice the new PIN** (under New Password and Confirm Password) and, after clicking on **OK**, the new PIN will be activated (Figure 16).



Figure 16 – The screen for entering the new PIN

8. Close PKI eToken Properties and **re-login** to PBZ COM@NET application (<http://com.pbz.hr/>).